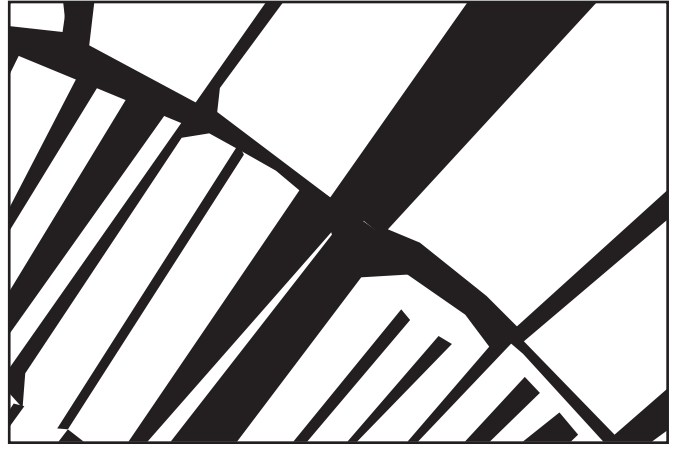


FULL SHEET PATTERN ORIENTATION

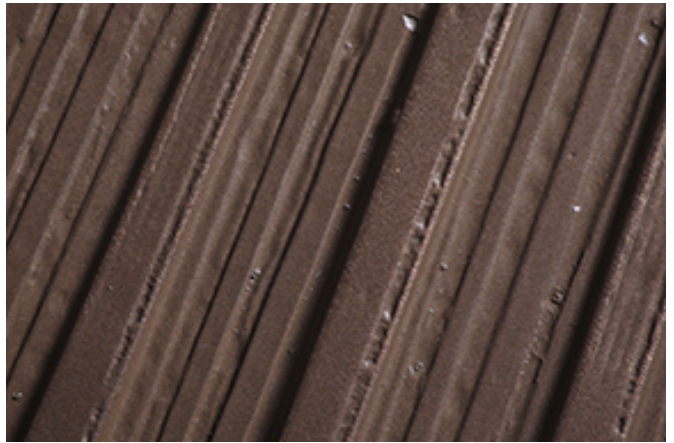
NOTE: THE ABOVE ILLUSTRATION IS FOR ORIENTATION ONLY.  
ACTUAL PATTERN MAY VARY FROM PATTERN SHOWN. RIGHT DOOR SHOWN ABOVE.



DETAIL 1:1



PROFILE 1:1



SWATCH

PART #: 90125-005

MATERIAL: BONDED BRONZE

PATTERN: ECLIPSE (RIGHT)

PATINA: NATURAL

SHEET DIMENSIONS: 48" X 120" X .289" ± .050  
(1219 mm X 3048 mm X 7.3 mm)

QTY: \_\_\_\_\_

APPROVED BY: \_\_\_\_\_

UNLESS OTHERWISE SPECIFIED, DIMENSIONS ARE IN INCHES		<b>FORMS+SURFACES</b> ® 30 Pine Street, Pittsburgh, PA 15223 Tel(800) 451-0410 Fax(412) 781-7840	
TOLERANCES (UNLESS OTHERWISE SPECIFIED): FRACTIONAL: $\pm 1/16$ ANGULAR/BEND: $\pm 1^\circ$ TWO PLACE DECIMAL: $\pm .030$ THREE PLACE DECIMAL: $\pm .020$		NAME	DATE
MATERIAL: BONDED BRONZE	RVS	JS	06/20/2011
PATTERN: ECLIPSE (RIGHT)	SG	SG	08/19/2018
WEIGHT: -	DO NOT SCALE DRAWING		
SOURCE: -	PROPRIETARY AND CONFIDENTIAL		
SCALE: N.T.S	THE INFORMATION CONTAINED IN THIS DRAWING IS THE SOLE PROPERTY OF FORMS+SURFACES. ANY REPRODUCTION IN PART OR AS A WHOLE WITHOUT WRITTEN PERMISSION IS PROHIBITED.		DESCRIPTION:  BONDED METAL SHEETS
	SIZE	DWG. NO.	REV
	B		000
			SHEET 1 OF 1