



BONDED METAL™ ELEVATOR DOOR SKINS

PRODUCT DATA





BONDED METAL™ ELEVATOR DOOR SKINS

PRODUCT DATA

Bonded Metal Elevator Door Skins are the perfect way to carry a design theme across an installation, from cab interior to cab exterior and beyond. Included within this group are door skins for elevator car doors and hoistway doors. Elevator car doors are an integral part of the cab itself and move along with it. Hoistway doors are the exterior doors located between an elevator shaft or hoistway and the floor landing. They are only visible from outside the elevator cab on each floor. When the cab reaches its destination, the elevator car door and the hoistway door open simultaneously.

Both elevator car doors and hoistway doors may be specified in a wide range of Bonded Metal patterns and patinas selected to provide maximum design versatility and unprecedented resistance to abrasion and wear.

Bonded Metal is the product of a unique technology that casts metal granules in a tough, FRP matrix. Advanced mold-making techniques assure perfect reproduction of every fine detail in the original patterned surface. The result is lightweight but extremely durable castings with the character and appearance of solid metal.

MATERIAL DESCRIPTION

Bonded Metal Elevator Door Skin selections are defined by three basic parameters:

BONDED MATERIAL	PATTERN	PATINA
The metal incorporated into the composite that gives the surface its color and character. Bonded Metal Elevator Door Skins are available in Bonded Aluminum, Bonded Bronze and Bonded Nickel Silver.	The distinctive texture or design cast into the Bonded Metal surface. Bonded Metal Elevator Door Skins are offered in a number of distinctive patterns. See pages three and four for pattern details.	A contrast-enhancing surface treatment applied to the Bonded Metal. Most Bonded Metal patterns may be specified in either of two distinctive patinas*. The lighter Natural Patina provides a subtle, more even tone; the Dark Patina offers heightened contrast between highlights and shadows for a more pronounced three-dimensional effect.
*Champagne, Chardonnay, Talus and Waterfall patterns are available in Natural Patina only.		

DOOR SKIN SIZES

Elevator Door Skins are available for the standard overall clear opening sizes shown below:

ELEVATOR CLEAR OPENING DIMENSIONS			MATERIAL THICKNESS
3'0" x 7'0"	3'6" x 7'0"	4'0" x 7'0"	The Bonded Metal castings available for elevator door skins have an overall sheet thickness of .132" or less. If door edges and returns are being used, the added thickness needs to be considered. It is the specifier's responsibility to determine if the desired Bonded Metal casting is suitable for a particular application in terms of both clearance and local code compliance. Please see page 4 for individual pattern thicknesses.
3'0" x 8'0"	3'6" x 8'0"	4'0" x 8'0"	
3'0" x 9'0"	3'6" x 10'0"		
<ul style="list-style-type: none"> • Custom sizes are available by special order. For some configurations, pattern placement and layout restrictions may apply. Please call to confirm available sizes for your particular configuration. • Single-speed side-opening doors are limited to a maximum door skin sheet width of 48" including returns, with the exception of Champagne and Chardonnay, which are limited to a maximum of 30". 			

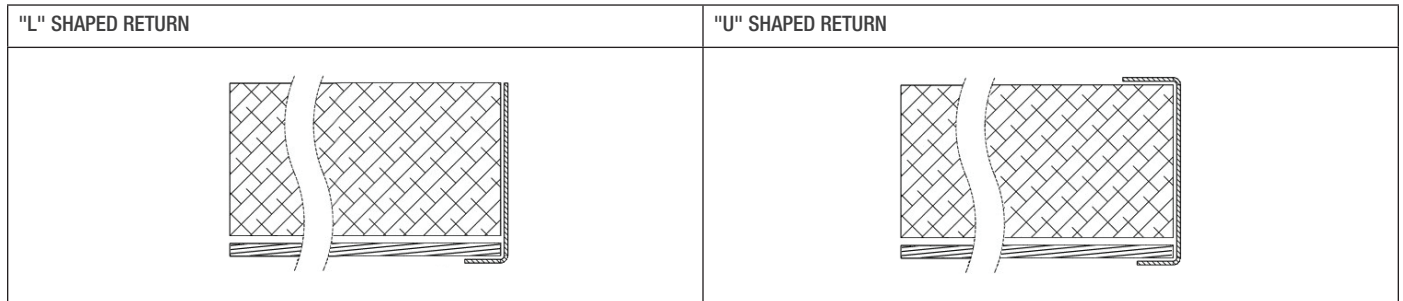


BONDED METAL™ ELEVATOR DOOR SKINS

PRODUCT DATA

EDGES AND RETURNS

Bonded Metal Elevator Door Skins are typically used with a formed metal trim piece that captures the exposed edge of the Bonded Metal casting. Edge trim can be specified with an "L" shaped return or with a "U" shape that returns around the back side of the door. Trim pieces are supplied in either Stainless Steel, Fused Metal, or Elemental Metal; our Project Sales Coordinators can help you select a material that best complements your Bonded Metal Elevator Door Skins, and LEVELe or LEVELc Elevator Interior System elements. Please call to discuss material, design and dimensional considerations for door edges and returns.



INSTALLATION

Standard contact adhesive or epoxy resin should be used for adhering Bonded Metal Elevator Door Skins. All laminating should be performed using appropriate pressure and time considerations. Forms+Surfaces assumes no responsibility or liability for the efficacy of any third party's laminating procedures. Forms+Surfaces recommends the use of contact adhesives and epoxy resins that meet or exceed the following general performance criteria:

	T-PEEL STRENGTH	SHEAR STRENGTH
CONTACT ADHESIVE	20-25 pli	1100 psi
EPOXY RESIN	20-25 pli	2750 psi

Note: Data assumes a seven-day cure at 75° F.

MAINTENANCE & FIRE RATING

MAINTENANCE	FIRE RATING
<p>The Bonded Metal surface has been sealed with a high-quality interior/exterior acrylic lacquer. It is a hard, durable finish that will last for many years but can be damaged if cleaned improperly. Avoid using harsh abrasives. If solvents are ever required for cleaning only naphtha or other aliphatic hydrocarbons should be used. Because the surface is made with genuine metal, it is normal for Bonded Metal installed outdoors to weather to a deeper, natural patina over time. Bonded Metal does not absorb moisture and should not rot or rust.</p> <p>Fingerprints, smudges and more persistent dirt can be removed using an ammonia-free cleaner/degreaser such as Simple Green®.</p>	<p>Bonded Metal is NFPA and IBC class B fire rated and UBC class 2 fire rated.</p>

RELATED PRODUCTS

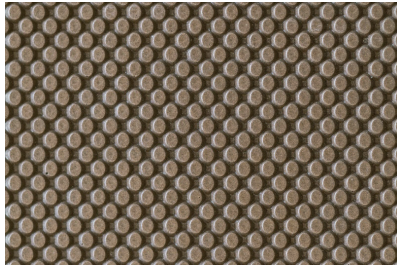
ELEVATOR SURROUNDS	ELEVATOR INTERIORS	WALL CLADDING SYSTEMS	ARCHITECTURAL ACCENTS
<p>Elevator surrounds and frames are available in a variety of materials and finishes to coordinate with your elevator door skins. Please give us a call for details on how to specify elevator surrounds.</p>	<p>Our LEVELc and LEVELe® Elevator Interiors are a cost effective alternative to custom cabs. Ideal for new equipment or modernization projects, each cab interior package includes everything needed for quick and cost-efficient installation: wall panels, handrails, trim pieces, light fixtures and ceiling.</p>	<p>LEVELe and LEVELr are highly configurable wall and column cladding systems that meet diverse aesthetic and performance criteria: frameless and aluminum-framed panels, versatile trim details, and an extensive array of materials from the F+S Surfaces palette are just some of the many options.</p>	<p>Stainless Steel, Fused Metal, and Elemental Metal sheet goods to match or complement your elevator door skins and elevator interiors are also available for frames, headers, jambs, returns, lobby walls and other areas.</p>



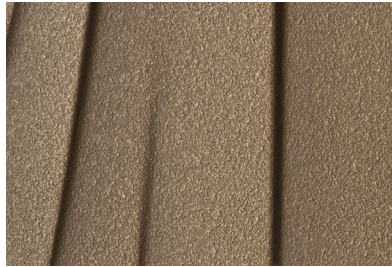
BONDED METAL™ ELEVATOR DOOR SKINS

PRODUCT DATA

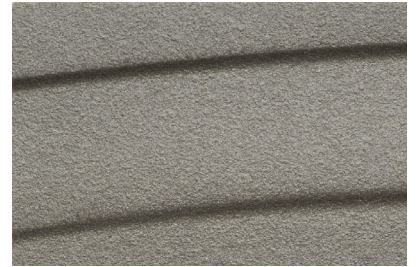
PATTERNS



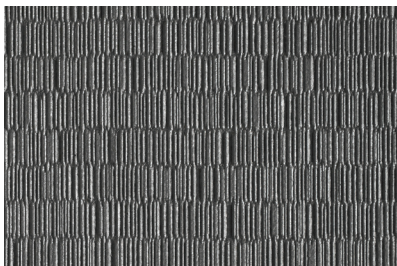
AUSTIN



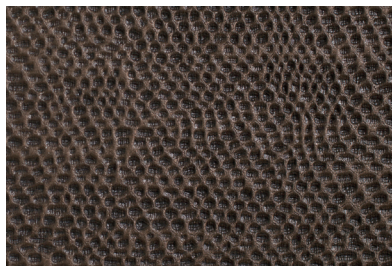
CHAMPAGNE



CHARDONNAY



DASH



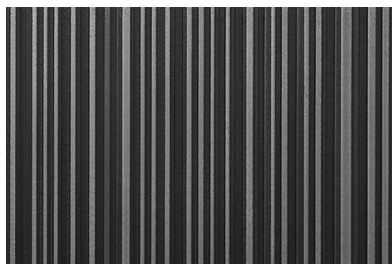
GLINT



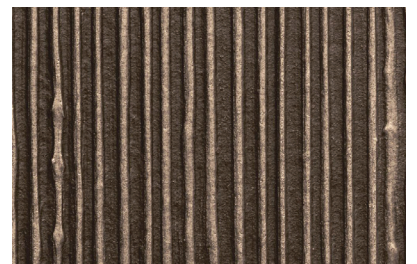
GRASS



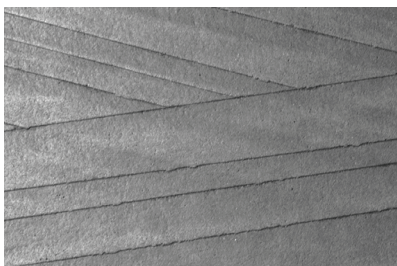
HERRINGBONE



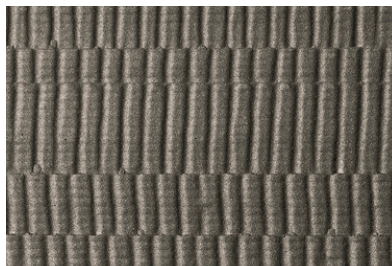
LOFT



RAIN



TALUS



TERRANE



TILT



BONDED METAL™ ELEVATOR DOOR SKINS

PRODUCT DATA

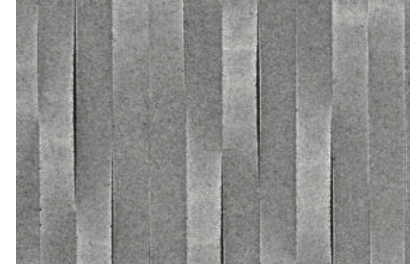
PATTERNS



TREVIA



UNDERCURRENT



WATERFALL

MATERIAL SPECIFICATIONS

For use in standard applications, the chart below shows thickness and sheet size dimensions for all patterns suitable for (under .132" thick) Bonded Metal Elevator Door Skins. Additional pattern options may be available depending on your application.

PATTERN	CASTING TYPE	THICKNESS	SHEET SIZE
AUSTIN	STANDARD	0.124" (3.1 mm)	48" x 120" (1219 x 3048 mm)
CHAMPAGNE	SLIM	≤ 0.063" (1.6 mm)	30" x 120" (762 x 3048 mm)
CHARDONNAY	SLIM	≤ 0.063" (1.6 mm)	30" x 120" (762 x 3048 mm)
DASH	STANDARD	0.125" (3.2 mm)	47.5" x 119.5" (1207 x 3035 mm)
GLINT	STANDARD	0.125" (3.2 mm)	47.5" x 119.5" (1207 x 3035 mm)
GRASS	STANDARD	0.128" (3.1 mm)	48" x 120" (1219 x 3048 mm)
HERRINGBONE	STANDARD	0.132" (3.4 mm)	48" x 120" (1219 x 3048 mm)
LOFT	STANDARD	0.100" (2.5 mm)	48" x 120" (1219 x 3048 mm)
RAIN	STANDARD	0.107" (2.7 mm)	48" x 120" (1219 x 3048 mm)
TALUS	STANDARD	0.128" (3.2 mm)	48" x 120" (1219 x 3048 mm)
TERRANE	STANDARD	0.113" (2.9 mm)	48" x 120" (1219 x 3048 mm)
TILT	STANDARD	0.125" (3.2 mm)	47.5" x 119.5" (1207 x 3035 mm)
TREVIA	STANDARD	0.115" (2.9 mm)	48" x 120" (1219 x 3048 mm)
UNDERCURRENT	STANDARD	0.119" (3.0 mm)	47.5" x 119.5" (1207 x 3035 mm)
WATERFALL	STANDARD	0.123" (3.1 mm)	48" x 120" (1219 x 3048 mm)

TECHNICAL SUPPORT & PROJECT MANAGEMENT

Because each project is unique, our knowledgeable support team is ready to help. Our technical sales, engineering, sustainability, and project management professionals regularly assist our clients worldwide. Please contact us at 800.451.0410 or sales@forms-surfaces.com to discuss your project.

HOW TO SPECIFY

A Design Guide is available for Bonded Metal Elevator Door Skins to lead you through the specification process in a simple, checkbox format. The Design Guide captures all the information needed to generate a quote: dimensions, features, and other options. To get started, give us a call or visit us at www.forms-surfaces.com.