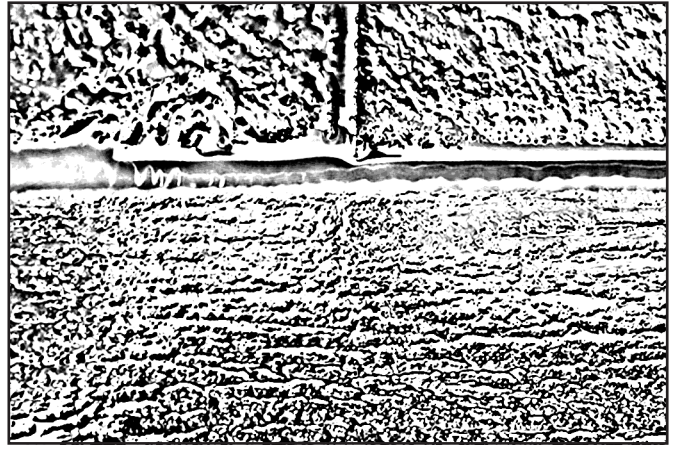


**FULL SHEET PATTERN ORIENTATION**

NOTE: THE ABOVE ILLUSTRATION IS FOR ORIENTATION ONLY.  
ACTUAL PATTERN MAY VARY FROM PATTERN SHOWN.



DETAIL 1:1



SWATCH

PART #: 951-00003

MATERIAL: CLASSIC MONOLITHIC

PATTERN: BRICKS

SHEET DIMENSIONS: 53" X 108"  
(1345mm x 2743mm)

SHEET THICKNESS\*: \_\_\_\_\_

\* Bricks is available in a variety of sheet thicknesses, which can impact the overall appearance of the texture. Shown in 1/4" (6 mm) thickness.

QTY: \_\_\_\_\_

APPROVED BY: \_\_\_\_\_

|  |          |  |            |
|--|----------|--|------------|
| UNLESS OTHERWISE SPECIFIED,<br>DIMENSIONS ARE IN INCHES  |          | <b>FORMS+SURFACES</b> ® 30 Pine Street, Pittsburgh, PA 15223<br>Tel(800) 451-0410 Fax(412) 385-4715  |            |
| TOLERANCES (UNLESS OTHERWISE SPECIFIED):<br>FRACTIONAL: ±5/32<br>ANGULAR BEND: ±1°<br>TWO PLACE DECIMAL: ±.030<br>THREE PLACE DECIMAL: ±.020 |          | NAME   | DATE       |
| MATERIAL: CLASSIC MONOLITHIC   |          | DWN JS   | 05/03/2016 |
| PATTERN: BRICKS  |          | RVS TE   | 02/10/2021 |
| WEIGHT: -  |          | DO NOT SCALE DRAWING   |            |
| SOURCE: -  |          | PROPRIETARY AND CONFIDENTIAL   |            |
| SCALE: N.T.S   |          | THE INFORMATION CONTAINED IN THIS DRAWING IS THE SOLE PROPERTY OF FORMS+SURFACES. ANY REPRODUCTION IN PART OR AS A WHOLE WITHOUT WRITTEN PERMISSION IS PROHIBITED. |            |
|  |          | DESCRIPTION:   | CASTGLASS  |
| SIZE   | DWG. NO. | REV  | SHEET      |
| B  |          | 000  | 1 OF 1     |