

PROJECT NAME: \_\_\_\_\_

DATE: \_\_\_\_\_

JOB LOCATION: \_\_\_\_\_

COMPANY: \_\_\_\_\_

SPECIFIER: \_\_\_\_\_

PLEASE USE ADOBE READER OR ADOBE ACROBAT TO FILL OUT AND SAVE FORM. USING OTHER PROGRAMS COULD RESULT IN UNSAVED DATA.

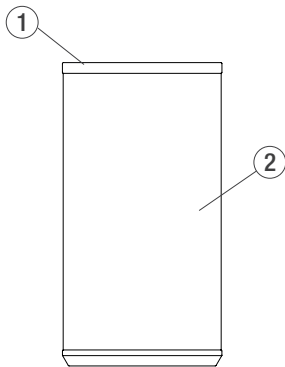
**MODEL**

**QUANTITY MODEL**

- \_\_\_\_\_ SLUNN-12T7 Universal Receptacle, 12-gallon, top opening, 7" diameter opening; polyethylene or stainless steel lid
- \_\_\_\_\_ SLUNN-12SD Universal Receptacle, 12-gallon, side opening, polyethylene dome lid
- \_\_\_\_\_ SLUNN-12SA Universal Receptacle, 12-gallon, side opening, stainless steel concealed ash lid

**OPTIONS**

**UNIVERSAL RECEPTACLE, 12 GALLON,  
TOP OPENING**



①

**Lid Material Options**

Please select **one** option below.

- Polyethylene, Slate-colored
- Stainless Steel, Satin finish\*

\*Optional for top opening, 7" diameter opening lid models; Standard for side opening, concealed ash lid models.

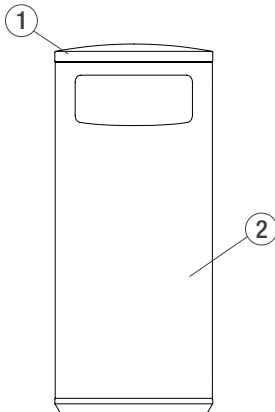
②

**Body Finish & Pattern Options**

Place an "x" in one box for your body finish/pattern combination.

	Patterns			
	No Pattern	Horizon Eco-Etch	Dune Impression	Fade Perforation
NOTE: Dune Impression Pattern is not available on 12-gallon side opening models.				
<b>Finishes</b>				
Stainless Steel, Sandstone				
Stainless Steel, Seastone				
Stainless Steel, Linen				
Stainless Steel, Diamond				
Stainless Steel, Satin				

**UNIVERSAL RECEPTACLE, 12 GALLON,  
SIDE OPENING, DOME LID**



**Lid Tether**

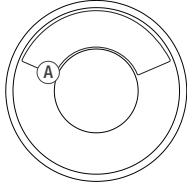
Please select **one** option below.

- Yes  No

**Graphic Message & Background Color Options**

Please select a message and color for Graphic A. **NOTE:** All letters and symbols are white; specified color is for the graphic's background.

**Top opening, 7" diameter opening lid**



**Graphic A Message**

- no graphic
- litter\*
- landfill\*
- recycling
- bottles & cans
- paper
- compost

**Graphic A Background Color**

- black
- blue
- green

**Side opening, dome lid (openings in receptacle body)**



**Graphic A Message**

- no graphic
- litter\*
- landfill\*
- recycling
- bottles & cans
- paper
- compost

**Graphic A Background Color**

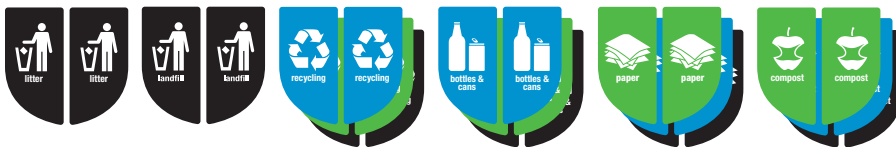
- black
- blue
- green

**GRAPHIC EXAMPLES**

**Top-Opening Graphics**



**Side-Opening Graphics**



\*Note: Litter and Landfill graphics are only available in black background color.

**Mounting Options**

- Freestanding with levelers
- Surface Mount\*
  - Add F+S stainless steel mounting hardware kit\*
  - Do not include F+S mounting hardware kit

*\*Hardware is required for surface mount litter receptacles. Mounting kits can be purchased from F+S for an additional charge.*

**NOTES**

---



---



---

Please send completed forms to [sales@forms-surfaces.com](mailto:sales@forms-surfaces.com) or contact us at **800.451.0410** with any questions.