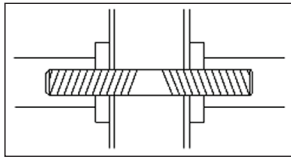


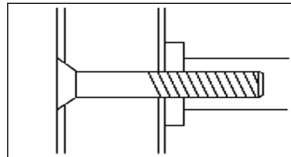


DOOR HARDWARE

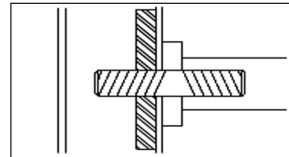
MOUNTING OPTIONS



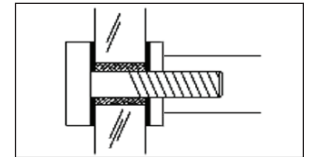
A-1 Back-to-back mount on wood or metal door with Rota-Lok.



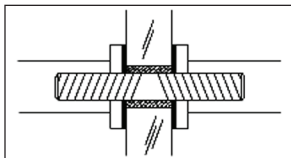
A-2 Single mount on wood or metal door with through bolt.



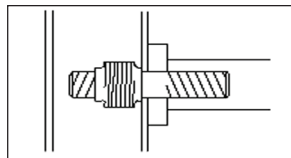
A-3 Concealed single mount on aluminum frame door with Rota-Lok and customer's reinforcement.



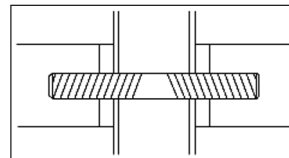
A-4 Single mount on glass door with end cap purchased separately.



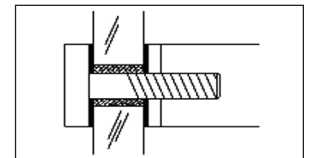
A-5 Back-to-back mount on glass door with Rota-Lok.



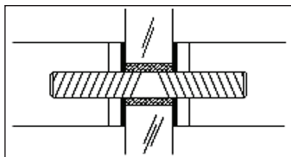
***A-6** Concealed single mount on wood door with threaded insert and Rota-Lok.



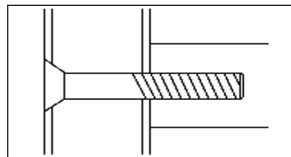
B-1 Back-to-back mount on wood or metal door with Rota-Lok.



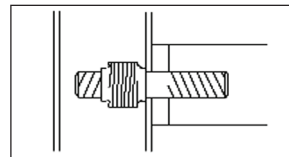
B-2 Single mount on glass door with end cap purchased separately.



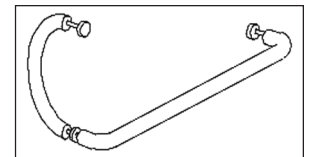
B-3 Back-to-back mount on glass door with Rota-Lok.



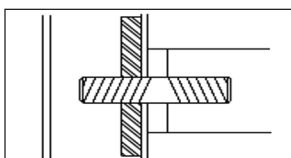
B-4 Single mount on wood or metal door with through bolt.



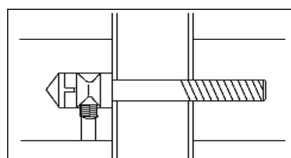
***B-5** Concealed single mount on wood door with threaded insert and Rota-Lok.



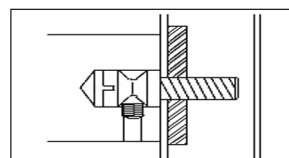
B-6 "L" Configuration: Adapt one end of each pull for back-to-back mounting with Rota-Lok. Specify "B" mounting for other ends.



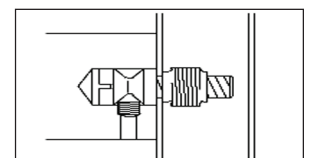
B-7 Concealed single mount on aluminum frame door with Rota-Lok and customer's reinforcement.



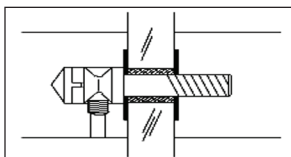
C-1 Back-to-back mount on wood or metal door with shoulder bolt.



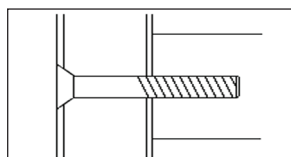
C-2 Concealed single mount on aluminum frame door with shoulder bolt and customer's reinforcement.



***C-3** Concealed single mount on wood door with shoulder bolt and threaded insert.



C-4 Back-to-back mount on glass door with shoulder bolt.



C-5 Single mount on wood or metal door with through bolt.

**Forms+Surfaces offers but does not recommend concealed mounting on wood doors. Frequent or heavy use can compromise the integrity of this mounting.*